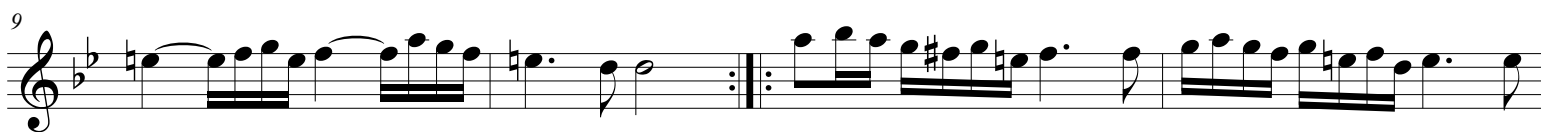


Suite from
THE FAIRY QUEEN

First Music

Henry Purcell

Prelude



Hornpipe



Third Act Tune
Hornpipe



Musical score for the Third Act Tune Hornpipe, consisting of four staves of music in 3/4 time. The key signature has one flat (B-flat). The first staff begins with a treble clef and a key signature of one flat. The music features a mix of eighth and sixteenth notes, with some triplet-like patterns. The second staff starts at measure 5 and includes a repeat sign. The third staff starts at measure 10. The fourth staff starts at measure 14 and ends with a double bar line and repeat dots.

Act IV Symphony



Musical score for the Act IV Symphony, consisting of four staves of music in common time (C). The key signature has two sharps (F# and C#). The first staff begins with a treble clef and a key signature of two sharps. The music is characterized by frequent rests and eighth notes. The second staff starts at measure 7. The third staff starts at measure 13 and includes the word "CANZONA." above the staff. The fourth staff starts at measure 19.